


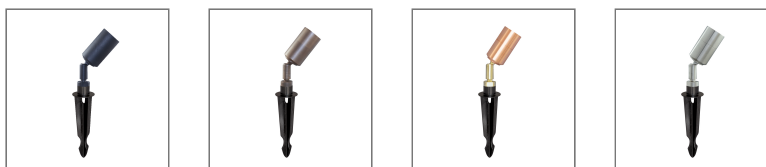
Physical Specification

Body	Quality corrosion resistant brass construction.
Lens	Clear tempered glass.
Reflector	High efficiency, reflective coated polycarbonate. 40ø reflector fitted Standard. 20ø/60ø optional. Refer to Custom Configuration Matrix.
Mounting Options	Ground or surface. Stake (160mm) included. Surface Mount accessory available.
Weight (kg)	1.03
Operating Temperature	-20øC to +50øC
IP Rating	IP66

Electrical Specification and Performance

Input Voltage	24VDC.
Total Load	4 watts. >90 lumens per watt.
Driver	Driver onboard technology.
Remote Power Supply	Recommended Meanwell HLG Series 24VDC constant voltage (sold separately). Consider adding remote control and constant voltage.
Control	Requires clean on/off signal. If switching via automation relays use on/off. Do not use dimming relays as these may leak residual voltage.
Dimming	Triac or Dali available with approved Power Supply and compatible dimming control
Certifications	

Finishes



- BLK Matt Black powder coat
- BZE Bronze
- COP Copper
- NKL Nickel

Installation Instructions

Ground or surface. Stake (160mm) included. Surface Mount accessory available.
 Refer to Product Page or Technical Resources page to download Installation Sheet.

Standard or Custom Configurations

Standard range - locally stocked item

Designed to suit a variety of residential and landscaping applications the Standard range is readily available from your local Distributor. To identify your unique ordering code simply add your chosen finish to the end of the code matrix or copy the standard item code below to order:

GANL-A5-4W-2700-40D-NKL

GANL	A5	4W	2700	40D	FINISH
GAN PREFIX	SERIES	TOTAL LOAD	LIGHT SOURCE (K)	REFLECTOR	FINISH
GANL	A5	4W	2700	▼ 40D	■ BLK
					■ BZE
					■ COP
					■ NKL

Custom configuration - commercial specification

If required, we can provide a Custom solution to suit your large residential or commercial project. The following code matrix shows the options available for customisation. For information, speak to your local Commercial Distributor. To assist with specification, simply refer to the GANX item code below:

GANX-A5-4W-X-CV-24VDC-2700-80-40-NKL-X-CL

Stocked Commercial Distributor configuration shown below or Distributor customisation can be configured using this matrix.

GANX	A5	4W	X	CV	24VDC	2700	80	40	FINISH	X	CL
GAN PREFIX	SERIES	TOTAL LOAD	DIMMING	INPUT TYPE	INPUT VOLTAGE	LIGHT SOURCE (K)	CRI	REFLECTOR	FINISH	HEX LOUVRE	LENS
GANX	A5	4W	D	CV	24VDC	2700	80	▼ 20D	■ BLK	■ HX	● CL
			X			3000	90	▼ 40D	■ BZE	● X	● FR
						4000	90	▼ 60D	■ COP		
									■ NKL		

Dimming: Triac or Dali available with approved Power Supply and compatible dimming control

Light Performance

Refer to next page for lighting performance diagrams.

Light Performance

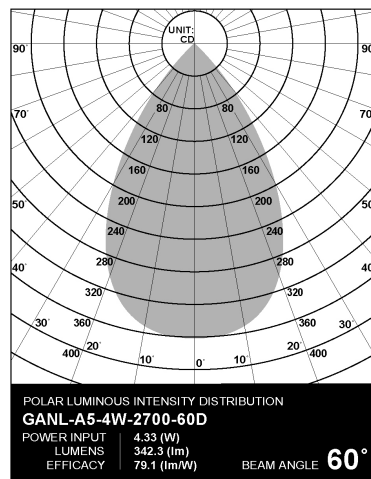
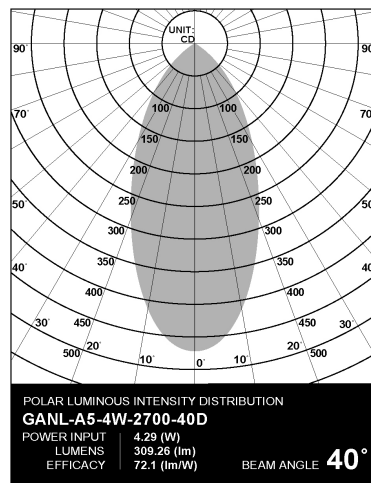
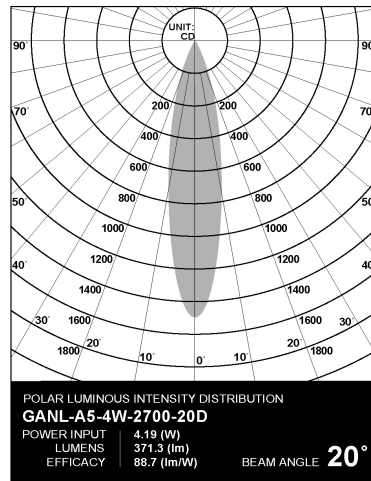
Photometrics

Photometrics

Diagram is based on test results as referred. Refer to Technical Resources page to view Photometric Diagram where applicable.

IES

IES Refer to Technical Resources page to download IES file.



Warranty

5 years.
 Refer to Technical Resources page to download Warranty Statement.

Wiring Guide

Refer to Technical Resources page to download Wiring Diagram/s.

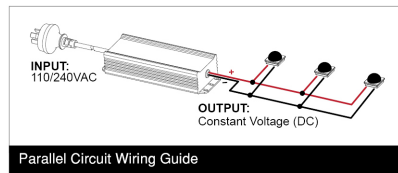


Diagram is a guide only. Wire colours and polarity may change depending on fixture and country.

Accessories

Associated accessories sold separately. Refer to Accessories.



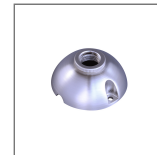
ACCENT 5
HOOD NKL



RISER 220
NKL



RISER 420
NKL



SURFACE
MOUNT NKL

Related Items for Installation

The following items are available to assist with installation and/or warranty compliance.



DC CABLE
2.9MM² 100M



ADHESIVE
LINED END
CAP 12-4MM
50 PIECES



POWER
SUPPLY
UNIT 60W

Related Fittings in Range

The following fittings are also available in the Accent Lights range.



ACCENT 8
NKL